

# THE BLUE ANGEL FOR YOUR OFFICE

EN



## CERTIFIED PROTECTION OF THE ENVIRONMENT

1978

### SINCE 1978

THE BLUE ANGEL, created in 1978, is the first and oldest environment-related label in the world for products and services which are environmentally friendly and beneficial to health. Products bearing THE BLUE ANGEL eco label are particularly eco-friendly and create and enhance brand trust.

4

### 4 INSTITUTIONS WITH 4 PROTECTION GOALS

The following four institutions are in charge of THE BLUE ANGEL: the Environmental Label Jury; the German Federal Ministry for the Environment, Nature Conservation and Nuclear Safety; the Federal Environmental Agency, and RAL gGmbH. All product groups bearing THE BLUE ANGEL are categorized under one of the four protection goals: Protects resources, Protects water, Protects climate, Protects health and the environment.

79

### 79% BRAND AWARENESS

Surveys carried out by the Federal Environmental Agency have confirmed THE BLUE ANGEL's high brand awareness of 79%.

34

### 34% PURCHASING CONSIDERATION

34% of consumers are influenced by the eco label in their purchasing decisions.

1.500

### 1,500 COMPANIES

About 1,500 companies are already using THE BLUE ANGEL in their product portfolio.

20

### 20% OF THE HOLDERS ARE COMPANIES DOMICILED OUTSIDE GERMANY

The eco label made in Germany has an excellent reputation internationally. Many countries have modelled their own environmental labelling concept on the Blue Angel system. THE BLUE ANGEL seeks cooperation with other countries and has already concluded agreements with Austria, China and Korea.

12.000

### 12,000 PRODUCTS AND SERVICES

No label in the non-food sector is as diversified and wide-spread as THE BLUE ANGEL. About 12,000 products and services from virtually all areas of everyday life are now labelled with THE BLUE ANGEL.

60

### 60 BRANDS AND COMPANIES

Approximately 60 brands/companies offer products made of RAL UZ 30a recycled plastics and bear the THE BLUE ANGEL label.



**RECYCLED PLASTICS**



**ENERGY-SAVING  
PRODUCTION PROCESSES**



**WASTE AVOIDANCE**

You will find more information about THE BLUE ANGEL and our product range on [www.durable.eu](http://www.durable.eu).



## BLUE ANGEL RANGE



# CARRY®

Useful for your daily office routine

The foldable CARRY® suspension basket offers quick access to documents needed every day and a great variety of options for use – whether stacked in an office cabinet or as a single unit in a mobile storage container.



### SUSPENSION BASKET CARRY®

- Folds flat
- For storing 30 suspension files
- Variable in use
- For drawers in cabinet bases and mobile storage containers or shelves in office cabinets

Dimensions: 362 x 260 x 320 mm (W x H x D)

Suspension width: 330 mm

# 2600    ♻️ 58 charcoal

📦 1 unit

### HEIGHT SPACER PINS FOR OPTIMO AND ECONOMY LETTER TRAYS

- Height spacer pins made of metal (not Blue Angel certified)
- For additional height distance in all formats

# 1700132001    ♻️ assorted

📦 1 bag

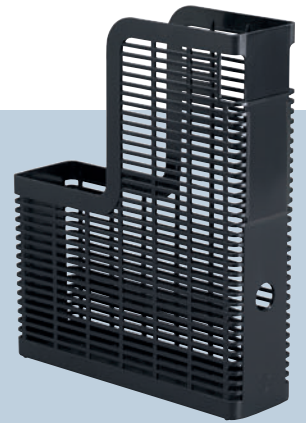
### MAGAZINE RACK OPTIMO

- Durable material quality
- Optimal handling with grip hole
- For formats up to C4

Dimensions: 71 x 315 x 246 mm (W x H x D)

# 1701504058    ♻️ charcoal

📦 1 unit



### CATALOGUE FILE OPTIMO

- Robust material quality
- Maximum flexibility in storage options
- Variable, width-adjustable compartments
- For brochures, books and magazines

Dimensions: 300 x 180 x 250 mm (W x H x D)

# 1709018058    ♻️ charcoal

📦 1 unit





**LETTER TRAY OPTIMO**

- Hard-wearing, robust quality
- Optimal handling
- Can be stacked vertically or staggered
- Can be retrofitted with height spacer pins
- For formats up to C4

Dimensions: 255 x 62 x 334 mm (W x H x D)

# 1700784058 charcoal  
1 unit



**LETTER TRAY OPTIMO A4 LANDSCAPE**

- Robust quality
- Can be stacked vertically or staggered
- Can be retrofitted with height spacer pins
- For A4 landscape formats

Dimensions: 324 x 62 x 230 mm (W x H x D)

# 1700801058 charcoal  
1 unit



**LETTER TRAY OPTIMO A3 LANDSCAPE**

- Robust quality
- Can be stacked vertically or staggered
- Can be retrofitted with height spacer pins
- For A3 landscape format or two A4 portrait formats

Dimensions: 436 x 105 x 333 mm (W x H x D)

# 1700786058 charcoal  
1 unit

# OPTIMO

For well-planned office organisation

OPTIMO office equipment come with many impressive details, providing an eco-friendly as well as optimal way to keep order in the office.



**DESK ORGANIZER OPTIMO**

- Sturdy, hard-wearing material
- With 5 compartment dividers
- Compartment dividers in different heights provide optimal storage facilities for scissors, pens, paper clips, etc.
- Additional compartment for letter envelopes

Dimensions: 162 x 110 x 118 mm (W x H x D)

# 1701588058 charcoal  
1 unit



## BLUE ANGEL RANGE

### IDEALBOX PEN TRAY

- Sturdy pen tray
- Ideal for desk drawers and mobile storage units
- 8 compartment dividers offer a great variety of organisation options for office utensils

Dimensions: 240 x 36 x 340 mm (W x H x D)

# 1712004058   charcoal  
1 unit



### IDEALBOX BASIC 7

- Drawer box made of sturdy material
- Optimal price/performance ratio
- For formats up to C4
- 7 open drawers
- Flexible options for use

Dimensions: 250 x 332 x 322 mm (W x H x D)

# 1712002058   charcoal  
1 unit

### IDEALBOX BASIC 5

- Drawer box made of sturdy material
- Optimal price/performance ratio
- For formats up to C4
- 5 open drawers
- Flexible options for use

Dimensions: 250 x 332 x 322 mm (W x H x D)

# 1712003058   charcoal  
1 unit



# IDEALBOX

Ideal for desktops and for the environment

The unobtrusive IDEALBOX design fits into every office and harmonises perfectly with other office accessories.

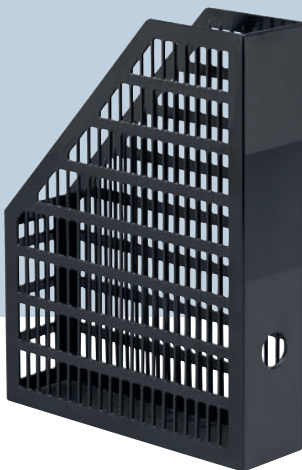




# ECONOMY

For a good overview

ECONOMY series magazine racks and letter trays feature easy and flexible handling – in simple design, both eco and office friendly.



## MAGAZINE RACK ECONOMY

- Sturdy construction
- Optimal handling with grip hole
- With smooth labelling area to attach labels
- For formats up to C4

Dimensions: 65 x 305 x 235 mm (W x H x D)

# 1701569058    charcoal

📦 1 unit



## LETTER TRAY ECONOMY

- Sturdy, solid construction
- Can be stacked either vertically or staggered
- Stacking connection bar ensures maximum stacking safety
- Can be retrofitted with height spacer pins to increase storage capacity
- For formats up to C4

Dimensions: 263 x 66 x 358 mm (W x H x D)

# 1701567058    charcoal

📦 1 unit



**DURABLE · Hunke & Jochheim GmbH & Co. KG**

Westfalenstraße 77-79 · 58636 Iserlohn  
Postfach 1753 · 58634 Iserlohn  
Telefon (02371) 662-0 · Telefax (02371) 662-221  
durable@ durable.de · www.durable.de

**INTERNATIONAL**

DURABLE · Hunke & Jochheim GmbH & Co. KG  
Westfalenstraße 77-79 · 58636 Iserlohn  
P.O. Box 1753 · 58634 Iserlohn · Germany  
Phone ++49-2371-662-0 · Fax ++49-2371-662-221  
durable@ durable.de · www.durable.eu

**FR**

DURABLE France S.A.S  
Immeuble Le Tryalis · 9, rue de Rosny  
93100 Montreuil  
Téléphone : 01 48 12 10 90 · Télécopie : 01 48 55 05 09  
serviceclients@durable.fr · www.durable.fr

**NL**

DURABLE Nederland B.V.  
Taxandriaweg 8c · 5141 PA Waalwijk  
Tel. 0416 543 543 · Fax 0416 543 058  
durable@durable.nl · www.durable.nl

**PL**

Biuro Obsługi Klienta DURABLE Polska  
Al.Kasztanowa 10 · 72-005 Przeclaw  
Tel: 091 432-40-70 · Fax: 091 432-40-83  
bok@durable.pl · www.durable.pl

**SE**

DURABLE SCANDINAVIA AB  
Fågelsångsvägen 4B · 186 42 Vallentuna  
Box 4 · 186 21 Vallentuna  
Telefon: 08 - 630 11 50 · Fax: 08 - 630 02 22  
info@durable.se · www.durable.se

**UK**

DURABLE (UK) Ltd.  
10 Nimrod Way, Wimborne, Dorset, BH21 7SH  
Phone 01202 89 70 71 · Fax 01202 87 33 81  
customeroperations@durable-uk.com  
www.durable-uk.com

**BE**

DURABLE Belgium N.V./S.A.  
Industriepark 14/101 · 9031 Gent-Drongen  
Tel. 09/281 26 44/45 · Fax 09 281 26 29  
durable@durable.be · www.durable.be

**IT**

DURABLE Italy  
Via Greppi Dr. Pietro, 15/B · 23824 Dervio (LC)  
Tel: 0341 80 78 06 · Fax: 0341 80 66 83  
info@durable.it · www.durable.eu

**RU**

Представительство фирмы DURABLE в России  
Москва, 125438,  
ул. Михалковская, дом 63Б корп. 3  
Тел\Факс: +7 495 601 9213  
durable\_russia@mail.ru · www.durable-russia.com

**US**

DURABLE Office Products Corp.  
1225-C N. Greenbriar Drive · Addison, IL 60101  
Voice: 800-273-3118 / 847-787-0100  
Fax: 847-787-0311  
customerservice@durableofficeproducts.com  
www.durableofficeproducts.com