



Introducing Refuse Sacks by Euro Malaysia

Quality.Creativity.Satisfaction.

2015

Refuse Sacks by Euro SME



Euro's refuse sacks are synonymous with clearing up waste. Used to line the inside of a dustbin or waste container to collect rubbish, these familiar plastic refuse sacks have been used as the primary means of waste collection and disposal for decades.

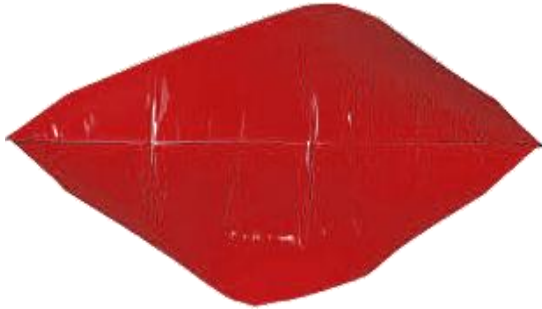
Refuse Sacks by Euro SME



These sacks have been lining the bins of family homes, but their uses are far more wide-ranging. They are also used for heavy duty waste removal on building sites and in gardens, for biodegradable rubbish disposal and more specialist waste disposal.

At Euro Malaysia we offer three different types of sealing for Refuse Sacks.

Different Types Of Bottom Sealing



Flat Seal

Manufactured by simply sealing the bottom edge so that no length of the can liner is sacrificed, flat seals provide a generally leak-proof product. They do not, however, conform well to the waste receptacle and can be difficult to handle.



Star Seal

The most common seal in the industry, star seals are manufactured by folding the bottom of the trash can liner over several times and then sealing it. This virtually eliminates leaks, allowing the liner to conform to the shape of the trash can and distribute the refuse evenly around the bag.



Gusset Seal

Manufactured with both sides of the bottom edge tucked in to form gussets, gusset seals are reinforced at the indented outer edges with four layers of film while the middle of the bag is sealed with two layers. This causes a tendency to leak with wet trash.

Easy-Pick Dispenser Box



◀ Shelf ready printed cartons.

Optimised sack selection to minimise waste.

Up to 5 times faster to pick and open*

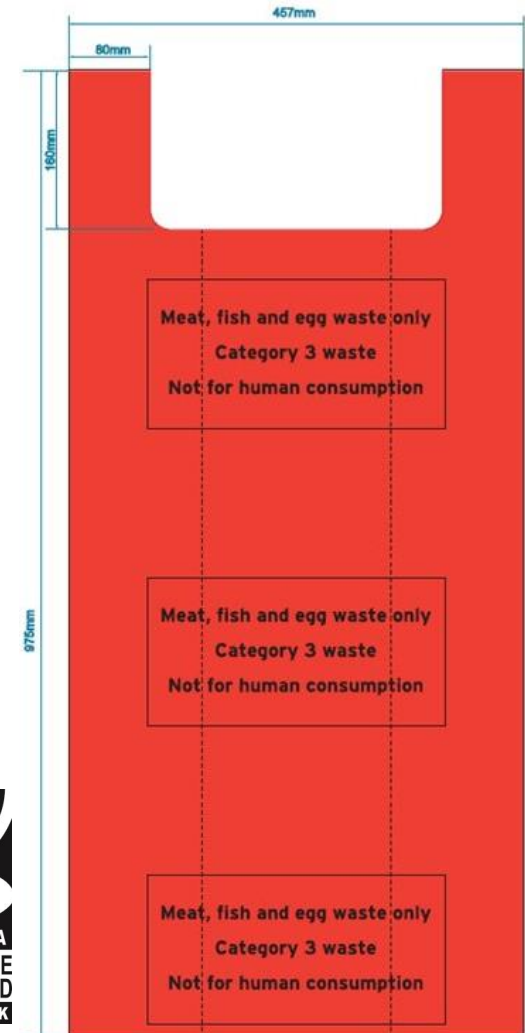
*pick and open time against standard carton and bag on roll dispensing.



CHSA Accredited Refuse Sacks By Euro Malaysia

Euro Malaysia's refuse sacks are CHSA (Cleaning & Hygiene Supplier Association) approved. Purpose of CHSA is to provide protection to producer, distributors, buyers and consumers of plastic refuse sacks from misleading and inaccurately described products and provide the buyers of high quality products with an indication that they are fit for the purpose intended. CHSA lays out the few basic obligations to ensure high quality refuse sacks:

- CHSA requires particular dimensions to be stated on the product label and to be accurate within tolerances. It even specifies a reference method for product measurements.
- Each Bag shall pass a number of appropriate quality tests and labelled correctly according to their capabilities.
- Sacks should be uniform in terms of appearance and colour.



HDPE Refuse Sacks

HDPE (high density polythene) garbage sacks and liners are very strong. This material has excellent tensile strength but has lower puncture resistance compared to other materials. It is ideal for use in environments where sharp corners are not a large part of the refuse going into the garbage sack. The smaller sizes are ideal for office use.

The larger sizes, which have increased thickness as compared to the smaller sizes, are great for heavy load.

MDPE Refuse Sacks

MDPE (medium density polythene) liners are typically thicker than HDPE and they offer good tensile strength and improved puncture resistance when compared to HDPE. This material also has a softer feel than HDPE. MDPE is also ideal for office trash cans. This material is also an economical choice for larger garbage containers with refuse that has some sharp corners but is not extremely heavy.

LDPE Refuse Sacks

LDPE (low density polythene) material has been the standard for all plastic bags since the beginning of the plastic bag industry. It has excellent puncture resistance but lower tensile strength, compared to MDPE. For this reason, LDPE trash can liners are usually thicker than HDPE and MDPE bags. LDPE refuse sacks are a good choice for heavy duty applications.

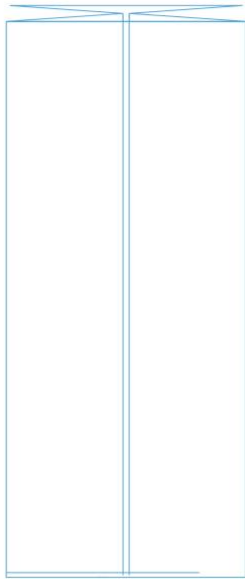
Refuse Sacks by Euro SME (Performance Blend G)



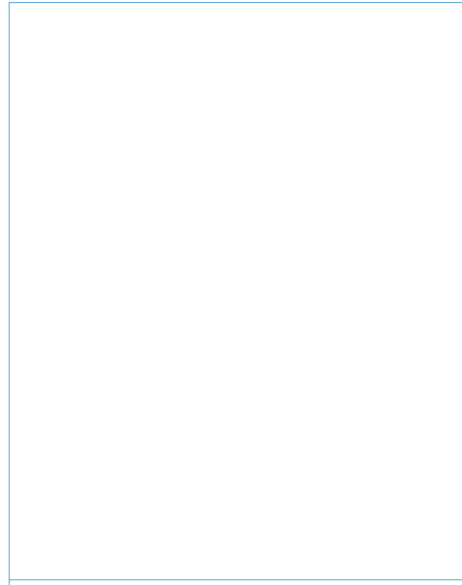
If anybody is looking for a more sustainable choice in refuse sacks, one cannot go greener than black refuse sacks. Research proves that every ton of recycled polythene used to make recycled black sacks uses 1.8 tons of less crude oil compared to virgin polymer blends.

It also reduces use of energy by two third and requires 90% less process water when compared to using a ton of virgin polyethylene. We have manufactured black refuse sacks using 100% of recycled materials.

Refuse Sacks Blueprints



GUSSET SEAL



FLAT SEAL



STARSEAL

Our refuse sacks are manufactured in variety of colors, sizes and thickness, according to our customers` requirements.

Standard technical specification variations of our sacks:

Length : 500 mm -3000mm

Width : 200mm – 580mm

Thickness : 8 microns and above.

Euro SME Sdn Bhd & Euro Nature Green

(part of Euro Packaging Group ,UK)

No. 5, Jalan Utarid U5/1, Seksyen U5,
Mah Sing Integrated Industrial Park,
40150 Shah Alam,
Selangor Darul Ehsan,
Malaysia.

Tel : +603 7846 6301

Fax : +603 7846 6331

Mobile : +60 16 2815419

Email: enquiry@euromalaysia.com

www.euromalaysia.com

www.eurosme.com.my