

High-performance adhesive for larger areas (special foil carrier)

# Sigan 3



Fast adhesion of new textile floor coverings onto existing wood flooring / laminate

## Applications:

Patented, dry adhesive for the installation of textile and resilient floor coverings which guarantees to leave no residues when removed later. Suitable for any size area. Sigán is resistant to cleaning agents and spray extraction cleaning. Sigán is suitable for underfloor heating and permits usage under high loads and traffic such as chair castors or forklift traffic. For interior use only.

### ► Suitable for textile flooring\*:

- Textile floor coverings with all common backings (except for PVC backing)
- Carpet tiles with fleece
- Kugelgarn®
- FINETT 7 (100% PP needle punch floor covering)

### ► Suitable for use on\*:

- Sealed wood flooring incl. cork parquet (the sealing must have hardened for at least 3 months) with:
  - Water-based varnish
  - UV varnish
  - Acid-cured sealer
  - DD sealing varnish
- Laminate
- Melamine resin-coated tiles, smooth

**Note:** For additional combinations of floor covering and subfloor obtain technical advice.

\* see important notes

Provides the highest possible level of emission safety and contributes towards creating a healthy room climate. Marked with the "Blue Angel" for low-emission floor covering adhesives and other installation materials according to DE-UZ 113.



[www.bauer-engel.de/uz113](http://www.bauer-engel.de/uz113)

**ÖKOLINE**

for <span style="color: red;">new textile floor coverings  
**ON** <span style="color: red;">existing wood flooring, laminate

**Ingredients:** Acrylic copolymers, wetting and defoaming agents, plastic film, paper.

## Product features & properties:

- Quick and easy installation
- No trapped air bubbles thanks to micro-perforation and ventilation channels
- Floor covering immediately ready for foot traffic and loads
- Later removal leaves no residue
- DE-UZ 113/Environmentally friendly because of low emissions
- EMICODE EC1 PLUS/Very low-emission

## Technical specifications:

Packaging:	carton
Packaging content:	Sigan 3: 75 cm x 25 m Sigan 3 tape: 5 cm x 25 m
Shelf life:	min. 2 years
Colour:	transparent
Substrate temperature:	min. 15 °C
Open time:	none
Working time:	unlimited
Set to traffic:	immediately after installation
Sealing / jointing seams:	immediately after installation

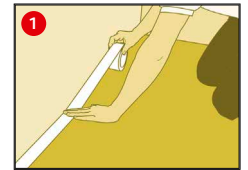
## Preparing the sub-surface:

- ▶ The substrate must be sound, flat, permanently dry, free of cracks, clean and free of materials that could impair adhesion.
- ▶ If there are oily residues, wipe the floor with a mild, diluted detergent, and then neutralise well with water (soak it up).
- ▶ Do not use any basic cleaners and do not sand.
- ▶ Trial bonding: Always perform trial bonding. Rub Sigan 3 firmly onto the substrate. Degrease substrate and repeat trial bonding if bubbles form or Sigan 3 detaches from the substrate. Obtain technical advice in case of insufficient bonding.
- ▶ Do not install onto newly sealed wood flooring (the new seal must harden for at least 3 months).
- ▶ Textile coverings and chosen needlepunch coverings are suitable. In order to minimize a possible forming of joints, you should allow the floor covering and the Sigan 3 to acclimatise sufficiently (48 h) according to the manufacture's recommendations.

## Application:

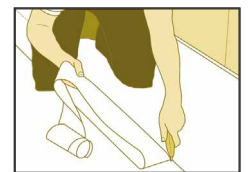
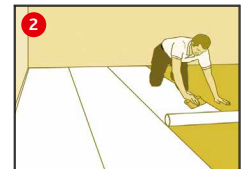
### 1 Install 50 mm Sigan 3 tape:

- ▶ Apply Sigan 3 tape along walls and doors, a) to even out uneven walls, b) for increased adhesion in the edge areas, c) for gluing areas that are difficult to access.
- ▶ Do not pull off the protective paper yet.
- ▶ Do not overlap the Sigan 3 tape, but mount edge to edge, or cut back to a butt-joint where overlapping.



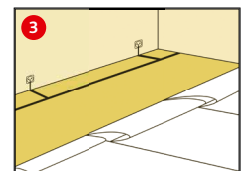
### 2 Installing 750 mm Sigan 3 Roll:

- ▶ Unroll the Sigan 3 in the running or working direction of the new floor covering – with a slight pressure on the roll – preferably roll out overlapping, rub down well and then cut back to the joint using a hooked knife, or roll out edge to edge directly (max. 3 mm gap allowed, no overlapping). Do not damage the subfloor.
- ▶ Sigan 3 may overlap Sigan 3 tape but must be cut back to fit edge to edge.
- ▶ Install the last run of Sigan 3 starting from the wall. Cut back the resulting overlap to fit edge-to-edge using a hooked knife.
- ▶ Do not damage the substrate while doing this.
- ▶ Wrap any remaining Sigan 3 roll with protective paper (edge protection and protection against dust).
- ▶ Only roll out the same amount of Sigan 3 as the amount of floor covering that will be installed on the same day.



### 3 Preparations for horizontal conductive floor covering:

- ▶ Pull back the Sigan 3 protective paper approx. 40 cm across the direction of the run or the seam of the new floor covering. Do not fold!
- ▶ With a distance from the wall of approx. 10 cm over the whole width of the room, glue one run of self-adhesive copper strip onto the exposed Sigan 3. The non-adhesive side faces upwards.
- ▶ Install a terminal lug (approx. 1 m) at the level of the earth potential connection to earth overlapping the previously laid copper tape. The connection must be carried out by a qualified electrician!
- ▶ Place the protective paper back onto Sigan 3 and press down.
- ▶ Carry out the same procedure on the opposite side (2 connections per room).



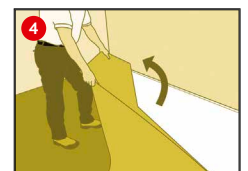
**Attention: Only use coverings with horizontal conducting back coatings.**

The copper tape may show through the floor covering.

Never apply the strongly bonding side (covered with protective paper) onto the subfloor.

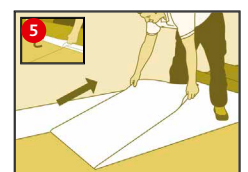
### 4 Installing the floor covering:

- ▶ Lay out the floor covering and fit approximately.
- ▶ Fold back half of the floor covering run in the running direction.



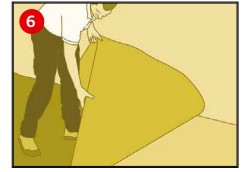
### 5 Pull protective paper off Sigan 3 tape.

- ▶ Pull the protective paper away from the Sigan 3 horizontally and straight up to the folded back floor covering.
- ▶ Cut off the pulled off protective paper leaving a remnant of 10 cm. Fold the remnant under the folded back floor covering (forming a flap).
- ▶ Stack the protective paper and roll together (minimises the waste volume).



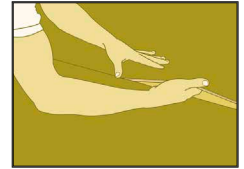
## 6 Textile flooring:

- ▶ Lay the first half of the textile floor covering free from tension and undulations and rub down.
- ▶ Fold back the second half of the textile floor covering and pull off the remainder of the protective paper with the help of the flap.
- ▶ Lay the textile floor covering, rub/roll down and cut to fit at the edge.



Installing textile floor covering with seam.

- ▶ Cut seam according to manufacturer's recommendation before installation. Use a steel rail underneath when making a double cut (never cut through Sigant 3).
- ▶ The seam of the floor covering must not lie on the Sigant 3 joint.
- ▶ Install the carpet run precisely at the seam.
- ▶ Fold back half of textile floor covering (can also be taken back from the seam).
- ▶ Pull off protective paper horizontally and form a flap.
- ▶ Lay and rub down the first run, and then lay the second run bit by bit precisely along the seam, and rub down.
- ▶ Rub/roll down well in crosswise direction.

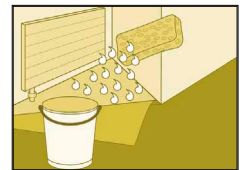


**Attention: Never use knee kickers and seam clamps!**

### Water trick

When laying the seam, when cutting to shape and when pushing the textile covering under radiators or around columns, etc., proceed as follows:

- ▶ Pull the protective paper from the Sigant 3.
- ▶ Dampen the Sigant 3 at the desired position using a sponge. Only use a little water as too much may damage the substrate.
- ▶ Push the textile covering into the desired position (aqua-planing effect).
- ▶ When the water evaporates, the Sigant 3 will recover its full adhesive strength.
- ▶ Rub down the textile covering again.



## Sigan: Removing floor covering without residues – without damaging the sub-surface.

- ▶ First cut floor covering into strips (approx. 25 – 50 cm) using a hooked blade. Do not damage the sub-surface!
- ▶ Separate the floor covering with edge tape from the sub-surface starting at one corner.
- ▶ Pull away floor covering **together** with Sigant at a **flat** angle, and you're finished!

No adhesive residues will remain on the sub-surface when using Sigant! As a rule, Sigant can no longer be removed from the back of the floor covering, but can be disposed off with the floor covering without problem.

- ▶ Before any further laying with Sigant, the sub-surface must first be vacuum cleaned. Then install the new floor covering with Sigant.



## Important notes:

Store in the standing position in a dry and cool place, away from direct sunlight. Rewrap opened rolls in protective paper.

- ▶ Wooden floor may only be covered with breathable floor-coverings.
- ▶ **Further substrates:**
  - Levelling compounds → Sigan 1 with Planus
  - 2-Component PU Levelling Compound → Sigan 1 with Planus
  - Wooden floors (untreated), chipboards, Plywood / MDF panels → Sigan 1 with Planus
  - Resilient floor covering (PVC, CV, Linoleum) → Sigan 2
  - Ceramic tiles, smooth → Sigan 2
  - Ceramic tiling / Terrazzo → Sigan 2
  - PVC-coated cork floor covering → Sigan 2
  - PUR and epoxy resin coating → Sigan 2
  - Polyolefin floor covering → Sigan 2
  - Textile floor covering → Sigaway

## Protection of the Workplace and the Environment:

The product does not require any special labour protection measures. For reasons of working hygiene, we recommend avoiding eating, drinking and smoking during processing of this product. Store out of the reach of children.

For more information refer to [www.uzin.com](http://www.uzin.com) or contact +49 731 4097-0

## Disposal:

Empty shells and the cardboard packaging can be recycled. Material remnants can be disposed of as household waste.

## Warranty:

**UZIN grants a 5-year warranty for all properties claimed in the processing instructions.**

Sigan complies to VOB Part C, Pt. 2.7 Adhesives: "They form a fixed and durable connection, and cause no impairment to either the floor covering or the sub-surface, and produce no pollution through odour after fitting".

- Follow the generally accepted rules of the trade and the technology for laying floor coverings according to the valid national standards EN.

The warranty becomes void if:

- Sigan 3 products are used in outside areas, operating theatres and in vehicle construction.
- unusual influences, and in particular those of a chemical or mechanical nature, affect the product.
- sub-surface unevenness occurs (insufficient stability of the sub-surface).
- in case of any utilisation or processing that deviates from the laying instructions (never use Sigan 3 on stairs or walls).
- discolouration arises from chemical reactions between the floor covering and the sub-surface.
- if joints are formed or warping occurs due to dimensional changes of the floor covering.
- the floor covering was laid stretched and under tension.
- dampness affects the Sigan 3.
- laying is carried out at temperatures below 15 °C (at the floor!).
- Sigan 3 is used in areas with increased air humidity and / or thermal loadings (e.g. conservatories).
- no adhesive trials are carried out.