

Premium dry adhesive fabric carrier

UZIN SIGAWAY ORIGINAL

For new resilient and textile floor coverings on smooth, elastic floor coverings or levelling compounds

MAIN APPLICATION FIELD:

- ▶ PVC, CV floor coverings
- ▶ rubber floor coverings in sheets and tiles
- ▶ textile floor coverings with all common backing types
- ▶ Kugelgarn® und Kugelvlies®
- ▶ FINETT 7, FINETT SOLID modular

SUITABLE ON / FOR:

- ▶ cementitious or calcium sulphate levelling compounds
- ▶ P3 / P5 / P7 boards, plywood and MDS boards
- ▶ metal
- ▶ epoxy moisture barriers
- ▶ PVC, CV floor coverings
- ▶ PVC safety flooring
- ▶ PUR and epoxy coatings
- ▶ artificial stone / terrazzo
- ▶ ceramic floor coverings
- ▶ Wood flooring including cork wood flooring coated with (coat must be at least cured for 3 months) / laminate
- ▶ textile floor coverings
- ▶ warm water underfloor heating systems
- ▶ wet shampooing and spray extraction cleaning according to RAL 991 A2
- ▶ heavy wear in commercial and industrial locations

Note: Obtain technical advice for additional combinations of floor covering and substrate



PRODUCT BENEFITS/FEATURES:

Sigaway Original is a double-sided dry adhesive tape on a fabric carrier with low emissions for installing resilient or textile floor coverings on existing resilient and textile floor coverings. For interior applications.

- ▶ Quick and easy installation
- ▶ The covering is immediately ready to accept traffic and loading
- ▶ Suitable for castor wheels
- ▶ Suitable for allergy sufferers



TECHNICAL DATA:

Packaging	carton
Pack size	100 cm x 25 m
Shelf life	min. 24 months
Color	white
Open time	unlimited
Setting time / cure time	none
Ready for foot traffic	immediately after installation
Minimum application temperature	15 ° C at ground level
Loadable	immediately after installation
Joint sealing	immediately after installation

*At 20 °C and 65% relative humidity.



for new resilient and textile floor coverings

ON resilient and textile floor coverings or levelling compounds

SUBSTRATE PREPARATION:

- ▶ The old floor covering must be firmly glued.
- ▶ Cut out or glue loose areas or holes, or repair with pieces of covering with the same thickness. It is also possible to fill the gaps to the level of the covering using filling compounds.
- ▶ The substrate must be sound, smooth, permanently dry, free from cracks, clean and free from materials that would impair adhesion.
- ▶ Use a suitable primer and levelling compound from the UZIN Product Guide according to the substrate, type of floor covering and demands.
- ▶ Allow the primer and levelling compound to dry completely.
- ▶ Properly clean and degrease aluminium and stainless metal and grind if necessary.
- ▶ The datasheets for other used products have to be observed.
- ▶ Allow the primer and levelling compound to dry completely.
- ▶ Test the substrate in accordance with applicable standard or notices and report any deficiencies.

In case of exposure with castor wheels, both, the existing and the new floor covering on the top, have to be suitable.

Installation on existing textile floor coverings:

Textile floor covering can only be covered with textile floor coverings. The thickness of the upper covering has to be higher than the one of the lower covering.

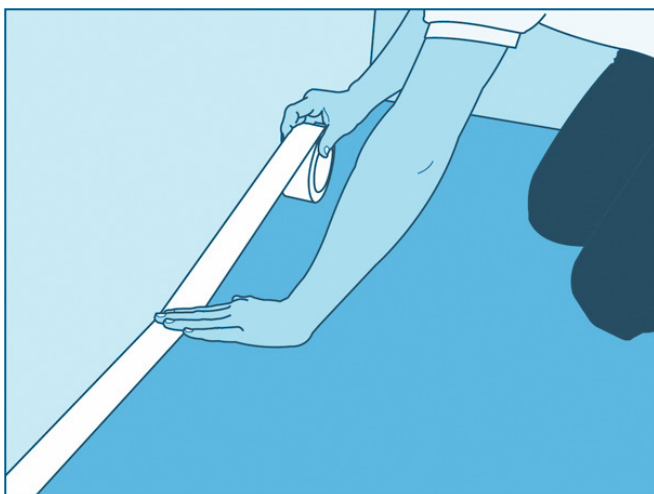
APPLICATION:

Installation of floor coverings:

1. Stick Sigaway Tape to the floor:

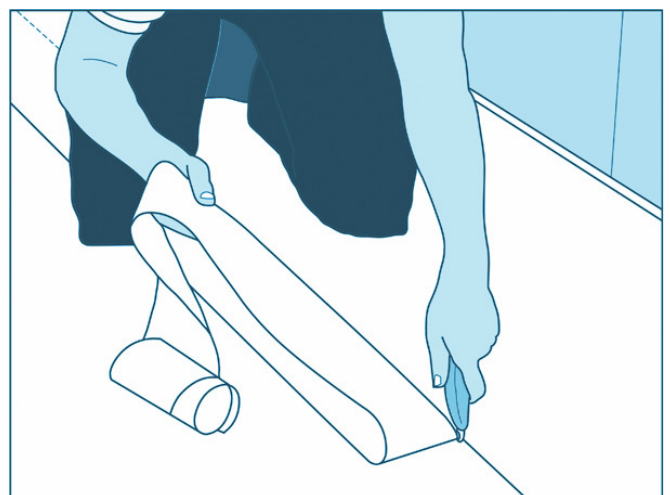
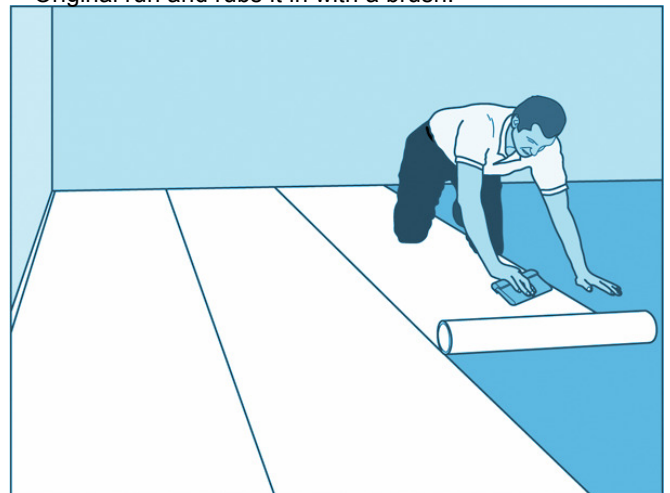
- ▶ For edge / wall areas, stick a strip of the double-sided adhesive tape Sigaway Tape onto the covering sub-surface.
- ▶ At the seam locations, stick two strips next to each other.

Attention: Only use plasticiser-resistant Sigaway Tape.



2. Installation of Sigaway Original:

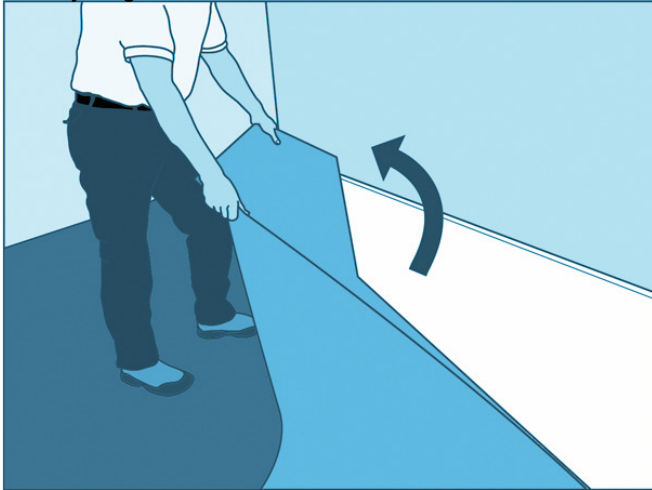
- ▶ Unroll the Sigaway Original in the running or working direction of the new floor covering – with a slight pressure on the roll – preferably roll out overlapping, rub down well and then cut back to the joint using a hooked knife, or roll out edge to edge directly (max. 3 mm gap allowed, no overlapping). Do not damage the substrate.
- ▶ Never bond the side covered with paper to the substrate!
- ▶ Sigaway Original may overlap Sigaway Tape but must be cut back to fit edge to edge.
- ▶ Install the last run of Sigaway Original starting from the wall. Cut back the resulting overlap to fit edge-to-edge using a hooked knife. Do not damage the substrate.
- ▶ Only roll out the same amount of Sigaway Original as the amount of floor covering that will be installed on the same day.
- ▶ **2-person procedure:** Unroll approx. 1 metre of Sigaway Original and align precisely to running direction. The first person moves backwards with the Sigaway Original roll. The second person stands on the unrolled Sigaway Original run and rubs it in with a brush.



3. Installation of the floor covering:

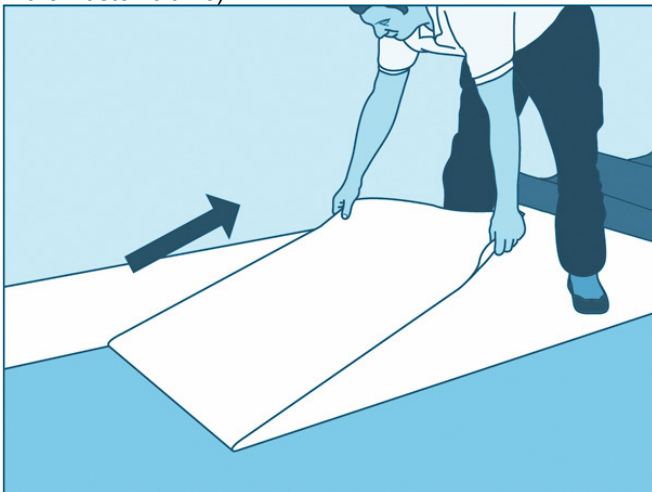
- ▶ Lay the carpet runs on the Sigaway without stressing, and match up roughly.
- ▶ Roll back the carpet to the middle in the direction of the run.

- ▶ Remove the protective paper of Sigaway Tape and Sigaway Original.



4. Removal of protective paper

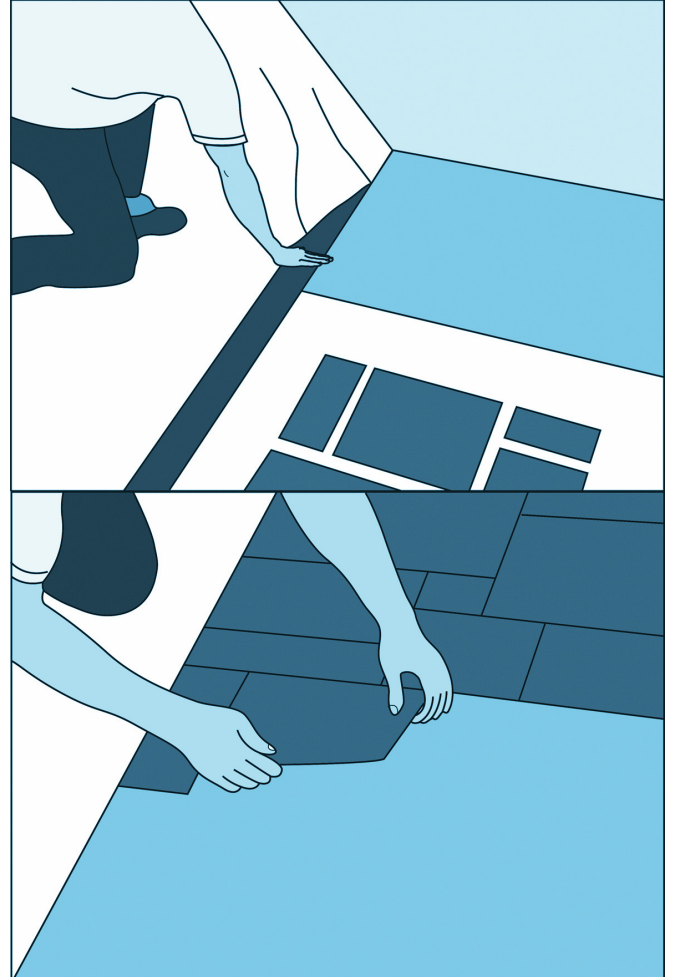
- ▶ Pull the protective paper away from the Sigan 3 horizontally and straight up to the folded back floor covering.
- ▶ Cut off the pulled off protective paper leaving a remnant of 10 cm. Fold the remnant under the folded back floor covering (forming a flap).
- ▶ Stack the protective paper and roll together (minimises the waste volume).



5. Floor coverings in planks and tiles

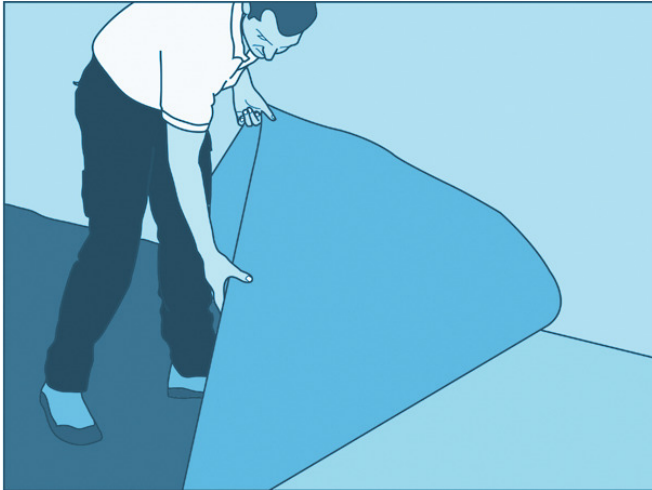
- ▶ Textile floor coverings must only be covered with textile floor coverings.
- ▶ Measure the room, divide into planks/tiles. Mark the starting point of the first row of planks/tiles with a suitable pen on the protective paper.
- ▶ Place a steel rail along the starting points and align.
- ▶ Pull the protective paper away from the Sigaway Original horizontally and straight up to the steel rail.
- ▶ Tear off the protective paper along the steel rail at an angle toward the top. The straight line this created serves as reference line of the first row of planks/tiles.
- ▶ Stack the protective paper and roll together (minimises the waste volume).
- ▶ Install the planks/tiles along the reference line without stressing and press down firmly by hand.

- ▶ Continually pull back the protective paper horizontally and straight. Install the floor covering as described.
- ▶ If the installation process is interrupted, the protective paper can be reapplied as protection for the Sigaway Original.
- ▶ After installation, rub/roll down firmly crosswise over the whole area.



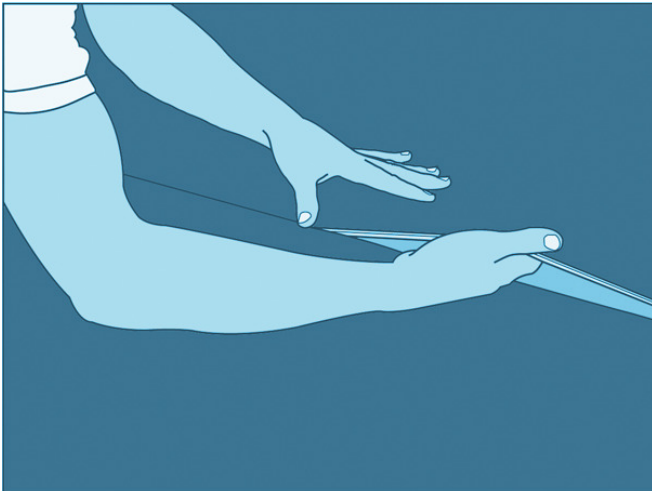
6a. Floor coverings in sheets

- ▶ Textile floor coverings must only be covered with textile floor coverings.
- ▶ Apply a stripe of Contact 85 or U-Tack 90 on Sigaway Original when installing textile floor coverings with rough backing in the seam and edge area of the floor covering to increase the bonding strength to the backing.
- ▶ Lay the first half of the textile floor covering free from tension and undulations and rub down.
- ▶ Fold back the second half of the textile floor covering and pull of the remainder of the protective paper with the help of the flap.
- ▶ Lay the textile floor covering, rub/roll down and cut to fit at the edge



6b. Floor coverings in sheets with seam

- ▶ Cut seam according to manufacturer's recommendation before installation. Use a steel rail underneath when making a double cut (never cut through Sigaway Original). The seam of the floor covering must not lie on the Sigaway Original joint.
- ▶ Install the carpet run precisely at the seam.
- ▶ Fold back half of textile floor covering (can also be taken back from the seam).
- ▶ Pull off protective paper horizontally and form a flap.
- ▶ Lay and rub down the first run, and then lay the second run bit by bit precisely along the seam, and rub down.
- ▶ Rub /roll down well in crosswise direction.



Water Trick

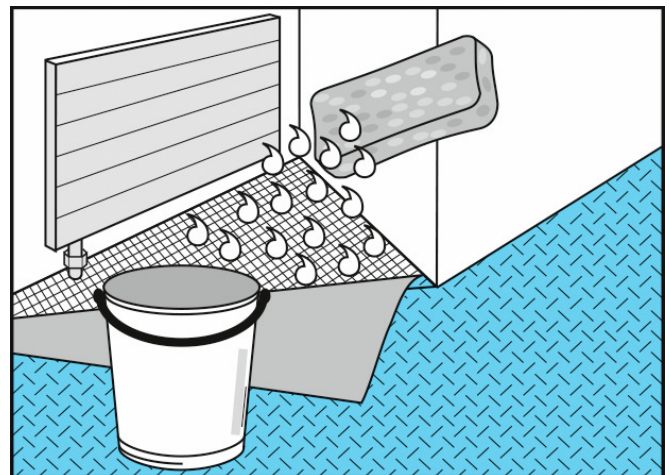
When laying the seam, when cutting to shape and when pushing the textile covering under radiators or around columns, etc., proceed as follows:

- ▶ Pull the protective paper from the Sigaway Original.
- ▶ Dampen the Sigaway Original at the desired position using a sponge. Only use a little water as too much may damage the substrate.
- ▶ Push the textile covering into the desired position (aquaplaning effect).
- ▶ When the water evaporates, the Sigaway Original will recover its full adhesive strength.
- ▶ Rub down the textile covering again.



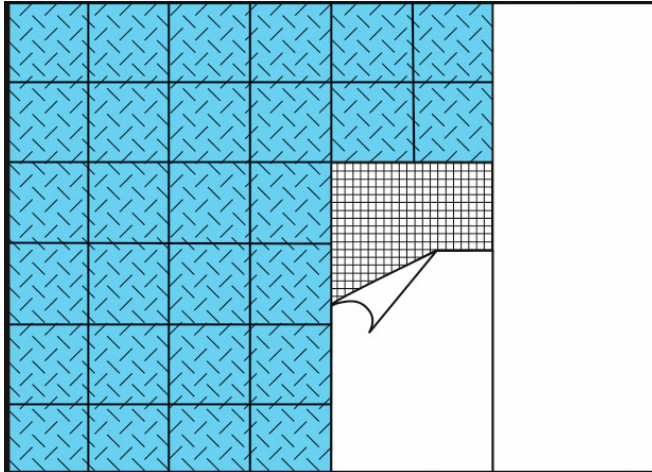
Water trick for carpets

The trick can be used when laying the seam, when cutting to shape and when pushing the textile covering under radiators or around columns, etc. Dampen the Sigway at the desired position using a wet sponge. Only use a little water as too much may damage the coverings. Push the textile covering into the desired position and when the water evaporates, the Sigaway will recover its full adhesive strength. Rub down the textile covering again.



Laying carpets tiles

- ▶ Remove the protective paper.
- ▶ Make the markings directly onto the sigway. With light sub-surfaces, make the markings directly onto the existing covering that will be covered over before rolling out the Sigaway. The markings can then be seen through the Sigaway material.
- ▶ When laying the tiles, only pull off as much protective paper from the Sigaway as is necessary at that moment in time.
- ▶ In order to ensure access to false floors, individual tiles can be lifted together with the Sigaway at any time: to do this, run a carpet knife along the edge of the tiles and cut the Sigaway on the floor. Then lift the tiles together with the Sigaway. Each tile can be re-used together with the Sigaway.



IMPORTANT NOTES:

Limitations:

1. When re-lifting a covering that has been laid with Sigaway Original, it is possible that adhesive and fabric remnants remain stuck to the floor covering or subfloor underneath.
2. Allow the floor covering and Sigaway Original to acclimatise sufficiently in the room.
3. Resilient floor covering (exception of luxury floor covering) should be jointed / welded.
4. Do not use toggle stretchers or seam clamps.
5. Any structure present on the covered covering/substrate may show on the new covering or impair the adhesive strength. In case of doubt, carry out a trial bonding.
6. Existing wooden floors or laminate covered with damp-proof floor coverings (e.g. PVC/CV covering, rubber, etc.) may deform (warp) depending on humidity conditions.

Storage:

Store in the standing position in a dry and cool place, away from direct sunlight.

For existing substrates that should get back their original conditions in the future, the use of the following Sigan products is recommended:

Levelling compounds, screeds (overlevelled) → Sigan 1 with Planus

P3 / P5 / P7 boards → Sigan 1 with Planus

Resilient floor coverings (PVC, CV, linoleum) → Sigan 2

PVC-coated cork floor coverings → Sigan 2

PUR and epoxy coatings → Sigan 2

Wood flooring / laminate → Sigan 3

Ceramic floor coverings / terrazzo → Sigan 2

Sealed cork floor coverings → Sigan 3

Marble and natural stone (discoloration)

Structured stone tiles (imprints, joints)

UZIN grants a 5-year warranty for all properties claimed in the processing instructions.

- ▶ Follow the generally accepted rules of the trade and the technology for laying floor coverings according to the valid national standards EN, DIN, VOB, OE, SIA and TKB-Technical Briefing Note 12.

The warranty becomes void if:

- ▶ Sigaway Original is used in outside areas, operating theatres and in vehicle construction.
- ▶ unusual influences, and in particular those of a chemical or mechanical nature, affect the product.
- ▶ substrate unevenness occurs (insufficient stability of the substrate).
- ▶ in case of any utilisation or processing that deviates from the laying instructions (never use Sigaway Original on stairs or walls).
- ▶ discolouration arises from chemical reactions between the floor covering and the substrate.
- ▶ if joints are formed or warping occurs due to dimensional changes of the floor covering.
- ▶ the floor covering was laid stretched and under tension.
- ▶ moisture affects the Sigaway Original
- ▶ laying is carried out at temperatures below 15 °C (at ground level)
- ▶ Sigaway Original is used in areas with increased air humidity and/or thermal loadings (e. g. conservatories).
- ▶ no adhesive trials have been carried out.

SEALS OF QUALITY & ECOLABELS:

- ▶ EMICODE EC 1 PLUS / Very low emission
- ▶ DE-UZ 113 / Environmentally friendly because of low emissions

COMPOSITION:

Acrylic copolymers, wetting and defoaming agents, tissue carrier, paper.

PROTECTION OF THE WORKPLACE AND THE ENVIRONMENT:

The product does not require any special labour protection measures. For reasons of working hygiene, we recommend avoiding eating, drinking and smoking during processing of this product. Store out of the reach of children. For more information refer to www.uzin.com or contact +49 731 4097-0.

DISPOSAL:

Empty shells and the cardboard packaging can be recycled. Material remnants can be disposed of as household waste.